

# Installation Guide

## Visagraph™ III Standalone

*Updated February 22, 2006*



**Taylor Online, Inc.**

200-2 E. Second St, Huntington Station, N.Y. 11746  
(800) READ PLUS (732-3758) • Fax (631) 549-3156  
[www.readingplus.com](http://www.readingplus.com) • [info@readingplus.com](mailto:info@readingplus.com)



# REQUIREMENTS

Please check the following table to ensure that you meet the minimum system requirements before continuing on to installation.

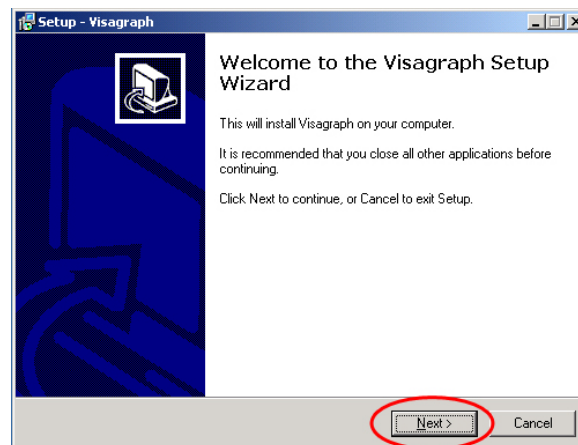
	Visagraph™ Standalone Workstation Requirements	Visagraph™ Online Workstation Requirements	Visagraph™ Network Workstation Requirements
OS	Win 2000 Pro, XP	Win 2000 Pro, XP	Win 2000 Pro, XP
CPU	Pentium 1.0+ Ghz	Pentium 750mhz (1Ghz recommended)	Pentium 750mhz (1Ghz recommended)
RAM:	512 MB (750 MB recommended)	256 MB	256 MB (512 MB recommended)
Hard Disk Space	25 MB free + 50Kb per recording	25 MB free + 50Kb per recording	25 MB free + 50Kb per recording
Interface	USB Port	USB Port	USB Port
Monitor Resolution	1024 X 768	1024 X 768	1024 X 768
Browser	IE 6.0+ w/ Java Sun Plug-in 1.5.0_5+	IE 6.0+ w/ Java Sun Plug-in 1.5.0_5+	IE 6.0+ w/ Java Sun Plug-in 1.5.0_5+
Required Software Version	5.2		Reading Plus 3.2.2



# INSTALLATION INSTRUCTIONS

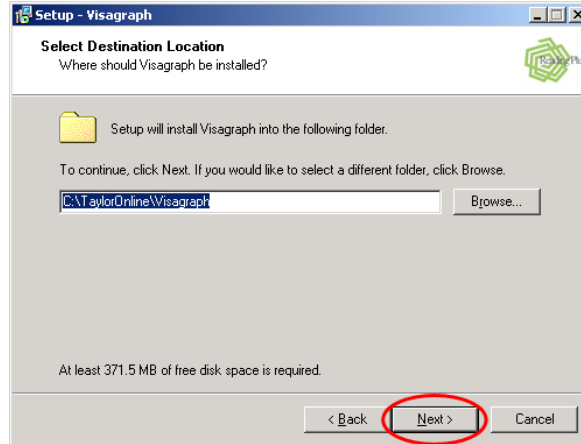
## Windows 2000/XP

1. Double click the Visagraph.exe file.
2. At the *Welcome to the Visagraph Setup Wizard* screen, click the *Next* button.



3. Select the port you would like the Visagraph™ III to use. (The default port is 80. If you would like to use another port for your Visagraph™ III, enter it into the field and click *Check Availability*.) If the port is not in use, click *OK*.

5. Choose your destination path and click *Next*.



6. If you are running Windows XP sp2, you might be presented with a screen asking to accept Apache. Click *Unblock*.



Once the installer is complete, click the *Finish* button. You may now begin using the Visagraph™ III.